

The Artists' Tale

The last of the 12 sets of Millennium stamps for 1999 celebrates the diversity of the arts in Britain's culture



An illustration from one of the earliest books printed in England, Chaucer's *The Canterbury Tales*, printed by William Caxton. Opposite, *Rocking Chair no2* by Henry Moore, whose characteristic semi-abstract figures are known throughout the world.

The final set of the 12 Millennium issues of 1999 will go on sale at post offices and philatelic outlets on 7 December. The theme is Artists. These colourful stamps feature specially commissioned paintings by four leading contemporary British artists. The **19p** stamp features 'World of the stage' by Allen Jones, **26p** 'World of music' by Bridget Riley CH, **44p** 'World of literature' by Lisa Milroy, and the **64p** 'New worlds' by Sir Howard Hodgkin. Their paintings can be seen in the 'Post Impressions' exhibition, sponsored by Royal Mail, at the British Library, London until 18 January.

FIRST DAY FACILITIES Unstamped Royal Mail FDC envelopes will be available from main post offices and philatelic outlets about a week before 7 December, price 25p.

Orders for FDCs with the stamps cancelled by a pictorial first day postmark of the Bureau or

Stratford-upon-Avon must reach the Bureau by 7 December. Price £2.22 UK (including VAT) or £1.89 overseas (no VAT).

Collectors may send stamped covers on the day of issue to: British Philatelic Bureau, 20 Brandon Street, Edinburgh EH3 5TT or to the Special Handstamp Centre, Royal Mail, St Stephen's Street, Birmingham B6 4AA (Stratford postmark), marking the outer envelope 'FD9927' (Bureau), or 'FD9928' (Stratford). Covers can be posted or handed in at main post offices for the Stratford postmark. A non-pictorial Stratford postmark is also available from the Special Handstamp Centre: request 'FD9928 NP'.

Bilingual Welsh/English versions of the Stratford handstamps can be obtained by sending covers to: Special Handstamp Centre, Royal Mail, Penarth Road, Cardiff CF11AA, quoting reference 'FD9928 Bil' (pictorial) and 'FD9928 NP Bil' (non-pictorial).

Details of sponsored handstamps for 7 December will be announced in the *British Postmark Bulletin* – available on subscription from the Bureau (£10 UK/Europe; £21.75 elsewhere). For a sample copy write to: The Editor, *British Postmark Bulletin*, Royal Mail, 2-14 Bunhill Row, London EC1Y 8HQ. Covers may bear just the 19p Artists' Tale stamp for any philatelic postmark in use on 7 December.

Cylinders and colours

19p W1 greenish yellow ● W1 bright magenta ● W1 new blue ● W1 black ● W1 silver

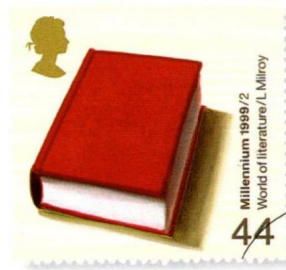
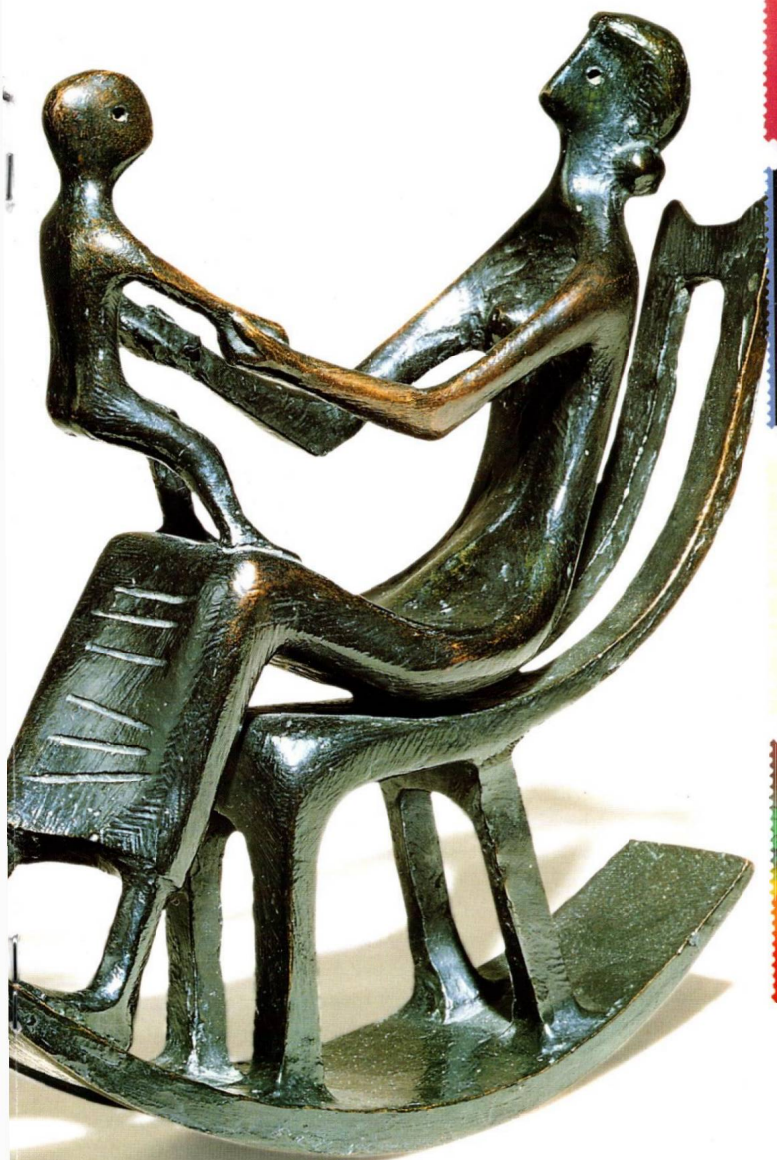
26p W1 lemon ● W1 orange ● W1 pale new blue ● W1 violet-blue ● W1 black

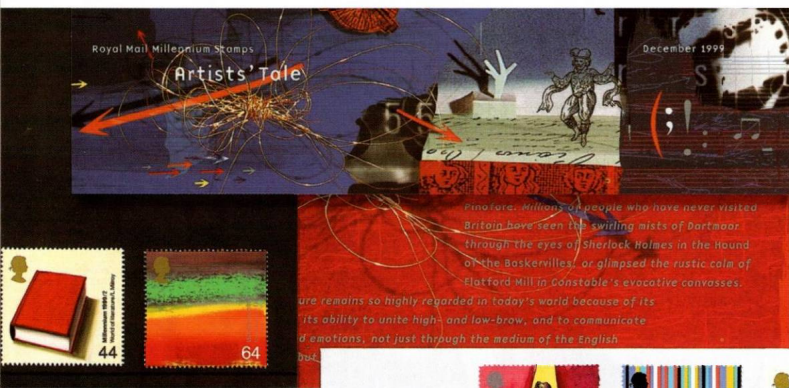
44p W1 greenish yellow ● W1 bright magenta ● W1 new blue ● W1 black ● W1 gold

64p W1 greenish yellow ● W1 yellow ● W1 bright turquoise-green ● W1 bright magenta ● W1 new blue ● W1 black ● W1 gold ● W1 silver

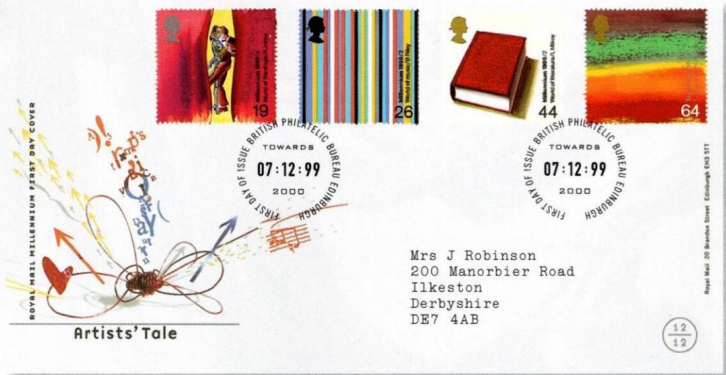
Phosphor cylinder W1 on all values

Caxton Chaucer by permission of The British Library; *Rocking Chair No2*, bronze by Henry Moore (1898-1986), Christie's Images London/Bridgeman Art Library



**Technical details****Printer** Walsall Security Printers**Process** Gravure**Size** 37 x 35mm**Sheets** 100**Perforation** 14 x 14.5**Phosphor** One band 19p ● two bands others**Gum** PVA**Central gutter** Horizontal

Pinotore. Millions of people who have never visited Britain have seen the swirling mists of Dartmoor through the eyes of Sherlock Holmes in the hand of the baskerville, or glimpsed the rustic coin of Clatford Mill in Constable's evocative canvases. are remains so highly regarded in today's world because of its ability to unite high- and low-brow, and to communicate of emotions, not just through the medium of the English



Mrs J Robinson
200 Manorbier Road
Ilkerton
Derbyshire
DE7 4AB

FIRST DAY OF ISSUE BRITISH PHILATELIC BUREAU EDINBURGH
TOWARDS
07:12:99
2000

FIRST DAY OF ISSUE STRATFORD-UPON-AVON
7-12-1999

FIRST DAY OF ISSUE STRATFORD-UPON-AVON
7-12-1999
DWRNDQ CYNWAF

MILLENNIUM PHILATELIC PRODUCTS A well-illustrated Artists' Tale pack (price £1.90) and stamp cards (25p each) will be available from main post offices and philatelic outlets. A Millennium Stamps Album, with pages for the 1999 issues, is available from the Bureau. Price: album and slipcase £19.99; sets of pages only £9.99. Pages for the 2000 issues are expected to be available during November, price £9.99. A presentation case has been produced to display the Millennium packs and covers. Enquiries: British Philatelic Bureau, 20 Brandon Street, Edinburgh EH3 5TT ●

2000 Millennium issues The 2000 series begins on 18 January with a set entitled 'Above & Beyond', followed by Fire & Light (1 February), Water & Coast (7 March), Life & Earth (4 April), Art & Craft (2 May), People & Place (6 June), Stone & Soil (4 July), Tree & Leaf (1 August), Mind & Matter (5 September), Body & Bone (3 October), Spirit & Faith (7 November), and Sound & Vision (5 December). Please note that some of the titles are subject to change. A Millennium definitive will be issued on 6 January. Details of this and the Above & Beyond set will be given next month ●

Yearpack £19.95; Yearbook £25.95; Leather-bound Yearbook (from Bureau only) £75.

1999 yearpack and yearbook The Yearpack and Yearbook containing all 48 Millennium stamps and the Royal Wedding issue, will be available from the Bureau, philatelic outlets and main post offices from 7 December ●

Millennium miniature sheet A Millennium miniature sheet containing four new 64p stamps, designed by David Gentleman, will be issued on 14 December 1999, price £2.56.

The designs of the stamps are based on his 20p Inventors' Tale stamp issued in January. Collectors will notice subtle differences in the designs of the four stamps in the sheet. The sheet is of horizontal format (120 × 88mm), printed by De La Rue Security Print in gravure. The four stamps bear two phosphor bands.

A first day cover envelope will be available, price 25p, and pictorial first day postmarks provided for the Bureau and Greenwich London SE. Serviced covers can be ordered from the Bureau, price £3.43 UK, £2.92 overseas; please state postmark required. Collectors can post their own covers at main post offices to receive the Greenwich postmark, or send covers to the Bureau for the Bureau postmark (reference FD 9929) or to the Special Handstamp Centre, Royal Mail, Mount Pleasant, London EC1A 1BB for the Greenwich postmark (FD 9930).

A non-pictorial Greenwich postmark (FD 9930NP) will also be available from the London Handstamp Centre and bilingual versions of the pictorial and non-pictorial Greenwich postmarks will be used at the Special Handstamp Centre, Royal Mail, Penarth Road, Cardiff CF1 1AA – request FD 9930 Bil or FD 9930NP Bil. Details of sponsored handstamps for 14 December will be announced in the *British Postmark Bulletin*. Collectors may affix the complete sheet or any combination of stamps from it for all first day and philatelic postmarks in use on 14 December.

The sheet will be available in a presentation pack, price £2.90, and there will be five stamp cards (25p each), one showing the complete sheet, the others each of the four stamps. In addition, the sheet will be available in a Royal Mail Millennium Moment Commemorative Document and on a Coin Cover including Royal Mint's £5 Millennium coin. The sheet on these items will be dual-cancelled with special Greenwich postmarks of 31 December 1999 and 1 January 2000. Both commemorative document and coin cover must be ordered in advance either from the British Philatelic Bureau or by using an order form available at post offices. Price £12.99 Commemorative Document and £22.50 Coin Cover; prices include postage and packing. Each Document will be numbered and accompanied by a certificate to confirm this. All orders will be despatched to customers during January.

The special Royal Mail Greenwich 31 December and 1 January postmarks will be available through Royal Mail's reposting service – details of these and other sponsored postmarks for these two dates will be published in the *British Postmark Bulletin*. Details of the special dual postmarking arrangements for the Millennium were published as a supplement to the August *Bulletin* and in the *Postmark Bulletin* of 23 July. They will be published again here next month ●

